

SL 92 4918



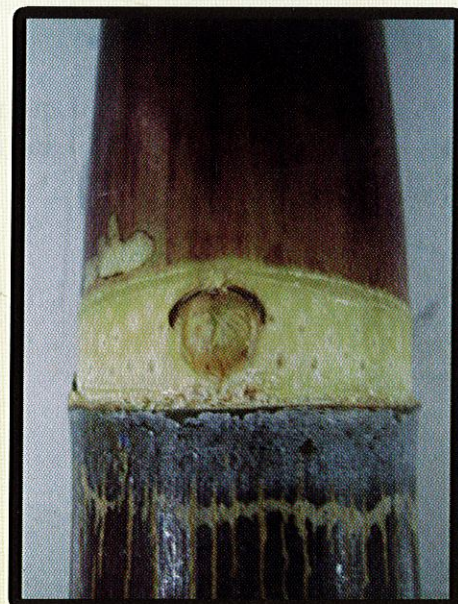
Growth habit of stool



Leaf blade auricle sheath



Type of ligule



Bud shape



Details of internodes

SL 92-4918

Historical background

Breeding site: Uda Walawe
Year bred: 1992
Year of official release: 2009
Parentage: CP 64 -103 - Selfed

Distinguishing characters

Trashing: Partial trashing
Harvesting: Easy to harvest
Germination: Good

General appearance*

Cane color: Purple (exposed), purplish yellow, wax present (unexposed)
Plant height: Tall

Internodes: **Shape:** Conoidal, **Corky patch:** Absent, **Bud groove:** Absent, **Wax band:** Even present
Growth ring: Medium even, pale color, **Root band:** Medium even
Bud: **Size:** Medium, **Shape:** Rounded bud with central germ pore, **Position:** Center
Node: Swollen
Leaves: **Laminar:** Green, **Width:** Broad, **Sheath:** Yellowish green, **Pubescence:** Absent,
Carriage: Curved at middle, **Top:** Open, **Ligules:** Broad crescent, **Auricle:** Deltoid

Agronomic characteristics

Cultivation regime: Irrigated *Maturity time:* Mid

Potential average yields	<i>Cane yield</i>	<i>Sugar yield</i>
	110 mt/ha	12 mt/ha

<i>Diameter:</i> 28 mm	<i>Stalk length:</i> 264cm
<i>Pith formation:</i> Low	<i>Flowering:</i> Sparse
<i>POCS:</i> 11.7%	<i>Fibre:</i> 12%
<i>Purity:</i> 86%	
<i>Ratoonability:</i> Excellent	

Pest and disease reaction

<i>Smut:</i> Highly resistant	<i>Woolly aphid:</i> Data not available
<i>LSD:</i> Data not available	<i>Stalk borer:</i> Low incidence
<i>WLD:</i> Moderate incidence	

Large mill test:

Estimated recovery: 10.03%
Mill performances are similar to Co 775